



# GMT MONTHLY MEMBERSHIP PROGRESS REPORT

Results as of: 8/31/2019

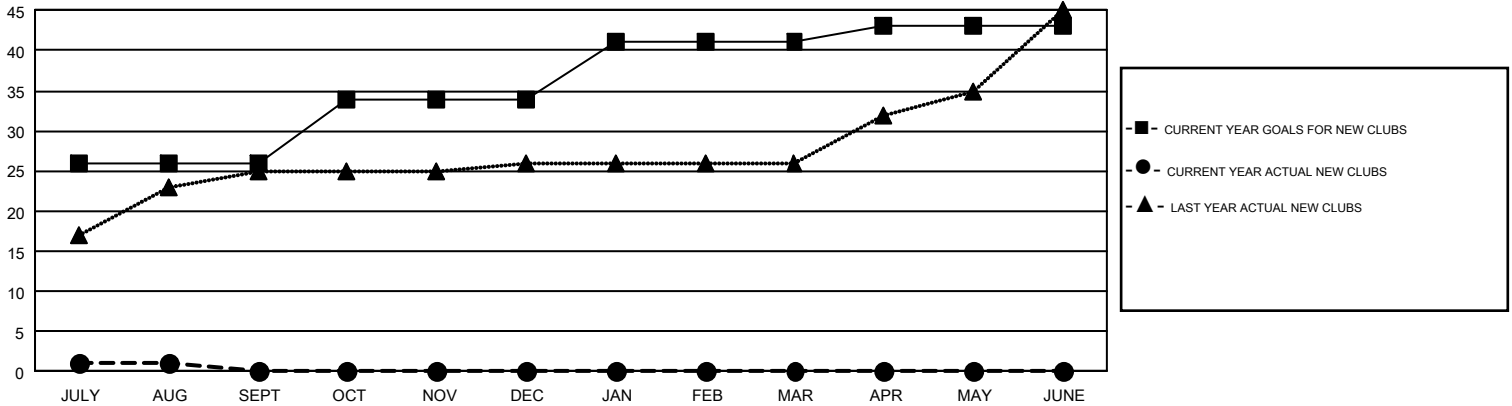
## GMT Constitutional Area 6, Group L

GMT: OPEN

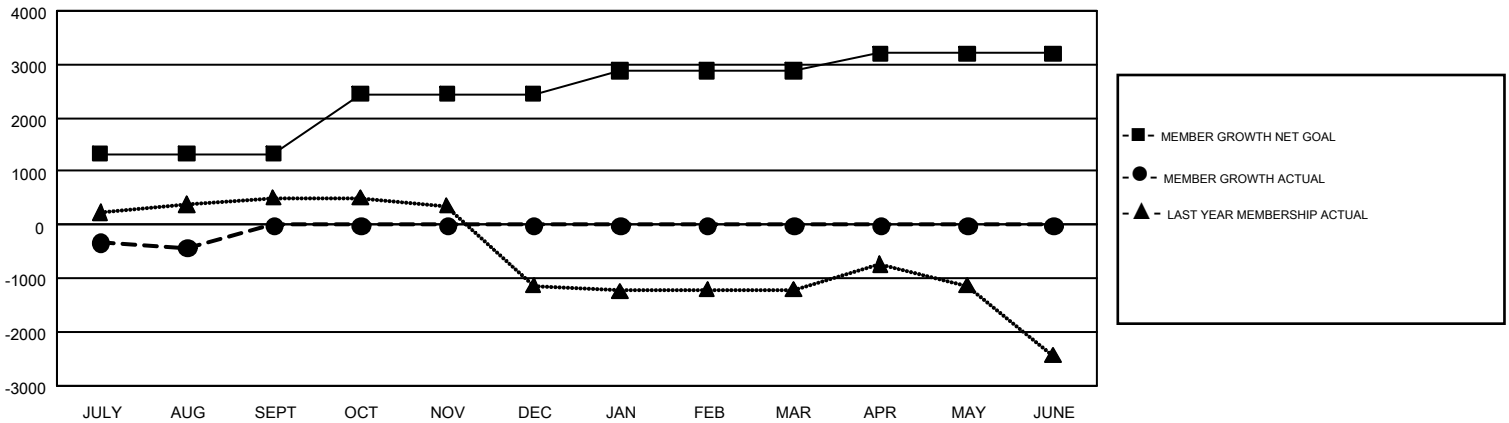
REPORT DOES NOT INCLUDE CLUBS IN UNDISTRICTED AREAS.

Clubs				Members			
RESULTS FOR 2019-2020				RESULTS FOR 2019-2020			
QUARTER	NEW CLUB GOAL	NEW CLUBS	DROPPED CLUBS	QUARTER	MEMBER GROWTH NET GOAL	MEMBER GROWTH ACTUAL	DROPPED MEMBERS ACTUAL (including transfers)
JULY/AUG/SEPT	26	1	2	JULY/AUG/SEPT	1325	580	891
OCT/NOV/DEC	8	0	0	OCT/NOV/DEC	1125	0	0
JAN/FEB/MAR	7	0	0	JAN/FEB/MAR	425	0	0
APR/MAY/JUNE	2	0	0	APR/MAY/JUNE	325	0	0

GOALS AND ACTUAL NEW CLUBS CUMULATIVE



GOALS AND ACTUAL MEMBERS CUMULATIVE



DROPPED CLUBS: 2	170 CLUBS OF 696 ADDED 1 OR MORE NEW MEMBERS	<u>GENDER DISTRIBUTION</u>
<u>DROPPED MEMBERS</u>		MALE            24,299 (62.99%)
DECEASED            14		FEMALE        14,274 (37.01%)
CLUB CANCELLED      17	<a href="#">CLICK HERE FOR CUMULATIVE MEMBERSHIP DATA</a>	TOTAL FAMILY UNIT MEMBERS            27,355
OTHER                    864		FAMILY MEMBERS PAYING HALF DUES      17,450
<b>TOTAL                    895</b>		